



GOVERNMENT OF NIUE

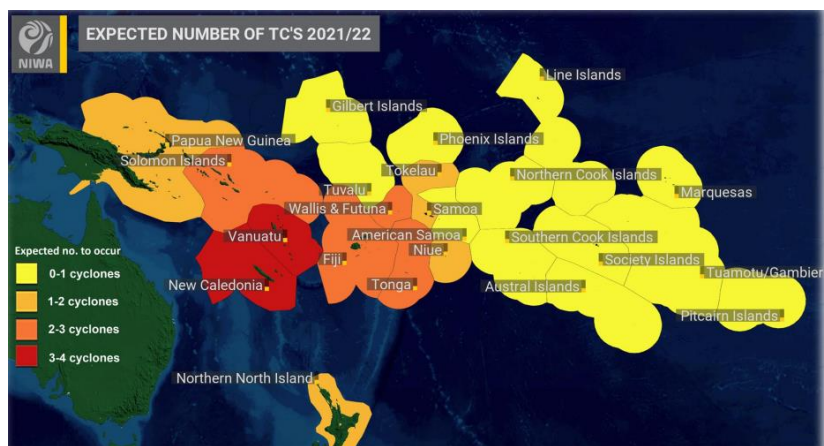
FAKAILOAAGA MAHUIGA

NONOFO MATAALA MO E MAUTALI MAE MAGAHALA AFĀ NEI 2021-2022

Alofi, Niue – 2 Novema 2021 – Kua kamata tuai e magahala afā mae tau 2021-2022 ha Niue, he aho 1 Novema 2021 ke hoko atu ke he aho 30 Apelila 2022. Ko e fuafuaaga numela afā ke lata mo Niue ko e 1 ke he 2 e afā he magahala afā nei. To tumau ni e motu ke aofia ke he tuaga fa mahani mau mae magahala afā nei. Pete ia, maeke agaia ni he tau afā tokaimaka ne tu tata mai ke hoko mai mo e lauia ai ha tautolu a motu.

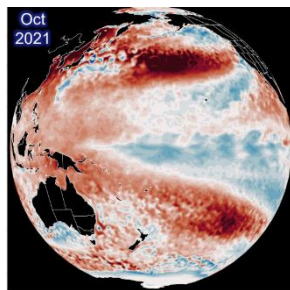
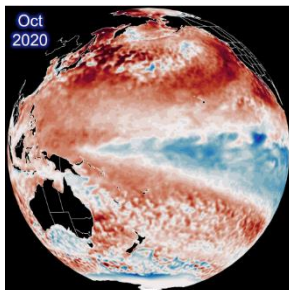
Ko e fuafuaaga numela afā mae atu Pasifika ko e 12. Amanaki ke 3 e afā tokaimaka mo e molea e veveheaga 3 ke he 5.

Ko e El Niño Southern Oscillation (ENSO) ko e agaaga mahani mau a nai he matagi ke he Moana Pasifika.



Ua e veveheaga he ENSO ko e El Niño mo La Niña mo e veveheaga tūtaha po ke lotouho. Ko e tuaga he ENSO ke he magahala nei kua hoko ki ai ko e veveheaga he La Niña ke lata mae atu Pasifika kamata mai ia Novema ke hoko atu kia Fepuali.

Ko e tau ke ua a nei kua liu e La Niña ke foliga mai, fakamua ne kamata he matahiku he tau 2020, mo e hiki atu ke he tuaga tūtaha he lotouho he tau 2021. Kua amanaki e La Niña ke liu ke he tuaga tūtaha he mahina Mati 2022. Ko e La Niña foki kua amanaki ke malikiti haana malolo he matahiku ha Novema mo e fakaoti e tau 2021, to matukutuku hifo ia Mati 2022.



Ko e La Niña, ko e fakakiteaga he mokomoko e ea he fuga tahi ke he lotouho mo e faahi uta he Moana Pasifika. [Tau fakatino kua kitia ai e lanu moana koe tau vala tahi mokomoko.]

Ke lata mo Niue, he magahala La Niña kua amanaki ke malikiti hake e uha mai he tuaga fakaevalesi, amanaki ke mafanafana e ea mo

e gahoa e numela afā.

Kua pehe mai e Ulufakatonu he faahi gahua Fuafua Matagi ko Rossy Mitiepo ke fakatumau e tau tagata i Niue ke mailoga e tau fakailoaaga ke lata mo e tau numela he tokoluga he tau peau mo e tau tukuna peau ne puna mai ha ko e tau afā.

“Kia tumau a tautolu ke mailoga ke he tau talahauaga mo e tau numela he tokoluga he tau peau mo e tau tukuna peau ne puna mai hakoe tau afā. Ko e faahi lalo ha Niue ne lauia lahi ke he tau peau tafe pokoahu mo e loka uta, mo e nakai la liu ia ke he haana tuaga mahani mau, mai he 2 e magahala afā kua mole atu ki tua. Kaeke ke molea e tau tukuna peau 3.0 mita mo e kolofuta he tahi 4.0 to 6.0 mita, kua maeke he tau peau nei ke hamutia e tau koloa he kaukau tahi ne tu tokolalo mo e tata atu ki tahi. Mailoga fakalahi e tau fuafuaga pehe nei ke lata mae tau fifiliaga mo e tau fakatokaaga mautali he tagata”, ne talahau mai he Ulu Fakatonu Rossy Mitiepo.

Ko e tuaga La Niña foki ni ne tupu ai he magahala afā 2020-2021. Ko e 4 e numela afā ne holo tata mai ki Niue, aofia ki ai e tau matagi malolo lahi mo e tau tukuna peau. Ko e 2 e afā ne fakailoa e tau hatakiaga mautali mai he Niue Disaster Council (NDC).

- Afā ko Yasa (Veveheaga 5) tu ai 729 kilomita he mamao mo Niue. Laulahi he afā nei ke tamai e tau peau tokoluga mo e tau tukuna peau ke hoko atu ke he 4.0 e mita. Fakailoa ai e hatakiaga Lanu Moana ke lata mo Niue.
- Afā ko Zazu (Veveheaga 2) tu ai 210 kilomita he mamao mo Niue. Tau peau tokoluga mo e tau tukuna peau 6.0 e mita ne lauia ai e uaafo mo e tau hala tahi he faahi lalo he motu, mo e tau akau ne veveli. Fakailoa ai e hatakiaga Lanu Ago ke lata mo Niue.

Ko e tau fakakiteaga nei ke he tuaga he tau numela afā kua fuafua ki ai, pete ni he tu tokolalo mo e nakai hoko e afā ke he tuaga veveheaga tokoluga, koe lauia agaia ni ha tautolu a motu. Kua lata ke mailoga fakalahi foki e tuaga he ENSO, pete ni he tau fakakiteaga nei, ko e tau lekua tupu fakatufugatia mai he afā kua lata ni ke mautali a tautolu ki ai.

Fakaoti

Ka manako taha iloaaga fakalaulahi, matutaki kia:

Rossy Mitiepo – Director of Niue Meteorological Services metoffice.staff@mail.gov.nu

Rhonda Tiakia – GON Communications Officer niuegovt.media@mail.gov.nu