



GOVERNMENT OF NIUE

MEDIA RELEASE

FOR IMMEDIATE RELEASE

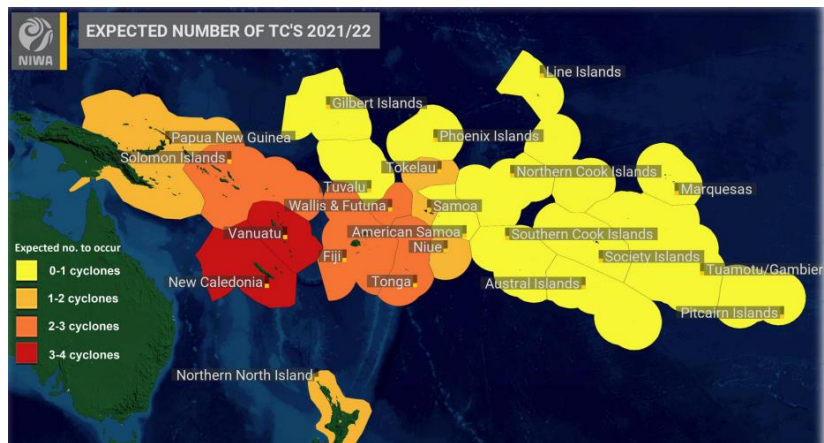
NIUE TO REMAIN VIGILANT FOR THE 2021-2022 CYCLONE SEASON

Alofi, Niue – 2 November 2021 – The 2021-2022 Tropical Cyclone Season for Niue starts 1 November 2021 until 30 April 2022. The expected number of cyclones for Niue is 1 to 2 cyclones with a normal risk for this season. Despite the normal risk for Niue, severe cyclones in more favourable regions can still migrate into our area.

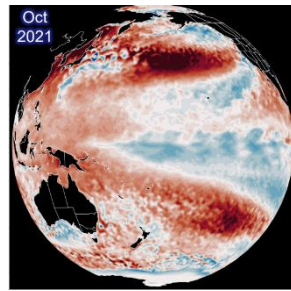
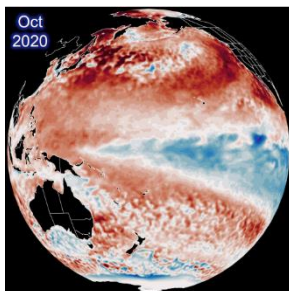
About 12 cyclones are predicted for the entire Pacific Region. At least three severe cyclones are predicted to reach Category 3 to 5.

The key climate driver for the cyclone season is the El Niño Southern Oscillation (ENSO). The current ENSO status favours weak La Niña

conditions in the tropical Pacific Ocean from November to February.



This would be a multi-year La Niña event, following on from the last La Niña event which began in late 2020, with a transition to ENSO neutral conditions in mid-2021. It is expected that the La Niña conditions will return to the neutral state in March 2022. After the maximum peak in November 2021, the relative magnitude will decrease throughout the period until March 2022.



La Niña – Cooling of the sea surface temperatures in the central and eastern tropical Pacific Ocean.

La Niña for Niue means an increase in rainfall for Niue or above normal rainfall, warmer temperature conditions and a low risk of tropical cyclones.

The Director of Niue Meteorological Services Rossy Mitiepo says that the people of Niue still needs to pay more attention to key information such as high seas and damaging swells associated with cyclones.

“The swells impacted the west coast of Niue, still unrecovered from the two previous cyclone seasons. The high seas of more than 3.0 metres high and damaging heavy swells predicted

above 4.0 to 6.0 metres is significant to rip out a vulnerable and exposed coastal area. Keep an eye out for these types of information for better planning and decision making”, says Director Rossy Mitiepo.

The recent TC Season 2020-2021 for Niue was also in a La Niña situation. Four cyclones passed close to Niue with associated gale-force winds and especially high seas and damaging swells. Two cyclones resulted in the National Disaster Council (NDC) issuing colour alerts.

- TC Yasa (category 5) closest position to Niue was 729 kilometres. The prominent effects were the high seas and damaging heavy swells up to 4.0 metres. A blue alert was issued for Niue.
- TC Zazu (category 2) closest position to Niue was 210 kilometres. High seas and damaging heavy swells up to 6.0 metres high caused major damage to the wharf and sea tracks on the west coast and fallen trees. A yellow alert was the highest alert issued for Niue.

This shows that with the low predicted number of cyclones for Niue this season and even with a less severe cyclone, it can still generate devastating effects. Therefore, being more vigilant is key no matter the status of ENSO.

ENDS

For more information, please contact:

Rossy Mitiepo – Director of Niue Meteorological Services metoffice.staff@mail.gov.nu

Rhonda Tiakia – GON Communications Officer niuegovt.media@mail.gov.nu